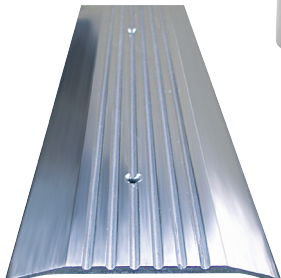
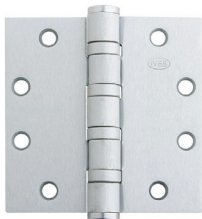


Mechanical Accessories quick ship guide

Our most popular accessories that ship in one week or less

Order from our offering of 700+ most popular mechanical accessories, overheads holders and stops, and sealing solutions that ship in one week or less through standard ordering. View the full offering of SKUs to order from.

IVES ■ **GLYNN-JOHNSON** ■ 



Mechanical Accessories

Table of contents

Use the table below to click or navigate the expansive 700+ most popular SKUs in each product category and sub categories for Ives (page 3), Glynn-Johnson (page 18) and Zero (page 19). You can also view the Frequently Asked Questions for details at the end of this guide (page 21).

Ives — Architectural hinges	3	Glynn-Johnson — Overhead holders	18
3 Knuckle concealed bearing hinges	3	100 Series concealed overhead door holders/stops	18
3 Knuckle spring hinges	3	410 Series concealed overhead door holders/stops	18
3 Knuckle plain bearing hinges	3	450 Series surface overhead door holders/stops	18
5 Knuckle ball bearing hinges	3	90 Series surface overhead door holders/stops	18
Electrified 3 knuckle and 5 knuckle hinges	5		
Ives — Continuous hinges	5	Zero — Thresholds	19
Aluminum geared hinges	5	Saddle thresholds	19
Pin and barrel hinges	6	Rabbeted thresholds	19
Ives — Pivots	6	Zero — Automatic door bottoms	19
Ives — Pulls and push plates	6	Heavy duty automatic door bottoms	19
Architectural pulls and push bars	6	Regular duty automatic door bottoms	19
Push plates	6		
Pull plates	6	Zero — Perimeter seal	19
Kick plates and armor plates	6	Door sweeps	19
Vandal resistant trim	7	Astragals	19
Flush pulls	7	Adjustable sealing systems	19
Sliding door pulls	8	Meeting stiles	19
		Rain drip	19
Ives — Flush bolts and coordinators	9	Zero — Weatherstripping	20
Automatic flush bolts	9	Self-adhesive weatherstripping	20
Constant flush bolts	9	Miscellaneous	20
Manual flush bolts	9		
Dust proof strikes	9		
Bar coordinators and filler bar	9		
Mounting brackets and gravity coordinator	10		
Ives — Latches, catches and bolts	10		
Surface bolts	10		
Door guards	10		
Roller latches and angle stops	10		
Invisible latches and catches	11		
Ives — Stops	11		
Floor stops	11		
Wall stops, bumpers and holders	12		
Kick down holder	13		
Plunger door holder and roller bumpers	13		
Residential door stops	14		
Door silencers and crash stops	15		
Ives — Exterior hardware	15		
Lock guards	15		
Viewers	15		
Mail slots	15		
Ives — Miscellaneous	16		
Brackets and hooks	16		
Window hardware	17		
Rescue hardware	17		

Model number	Description	Finish	Qty/Case
Ives — Architectural hinges			
3 Knuckle concealed bearing hinges			
3CB1 4.5X4 652/26D	3 knuckle concealed bearing hinge	652	24
3CB1 4.5X4 652/26D NRP	3 knuckle concealed bearing hinge, NRP	652	24
3CB1 4.5 x 4.5 626	3 knuckle concealed bearing hinge	626	24
3CB1 4.5 x 4.5 630	3 knuckle concealed bearing hinge	630	24
3CB1 4.5 x 4.5 630 NRP	3 knuckle concealed bearing hinge, NRP	630	24
3CB1 4.5 x 4.5 646	3 knuckle concealed bearing hinge	646	24
3CB1 4.5 x 4.5 FBLK	3 knuckle concealed bearing hinge	FBLK	24
3CB1 4.5X4.5 652/26D	3 knuckle concealed bearing hinge	652	24
3CB1 4.5X4.5 652/26D NRP	3 knuckle concealed bearing hinge, NRP	652	24
3CB1 5 x 4.5 652	3 knuckle concealed bearing hinge	652	24
3CB1HW 4.5 x 4.5 630	3 knuckle heavy weight concealed bearing hinge	630	24
3CB1-HW 4.5X4.5 630/32D NRP	3 knuckle heavy weight concealed bearing hinge, NRP	630	24
3CB1-HW 4.5X4.5 652/26D	3 knuckle heavy weight concealed bearing hinge	652	24
3CB1-HW 4.5X4.5 652/26D NRP	3 knuckle heavy weight concealed bearing hinge, NRP	652	24
3CB1HW 5 x 4.5 652	3 knuckle heavy weight concealed bearing hinge	652	24
3CB1HW 5 x 4.5 652 NRP	3 knuckle heavy weight concealed bearing hinge, NRP	652	24
3CB1HW 5 x 4.5 630 NRP	3 knuckle heavy weight concealed bearing hinge, NRP	630	24
3 Knuckle spring hinges			
3SP1 4.5X4 652/26D	3 knuckle spring hinge	652	24
3SP1 4.5 x 4.5 630	3 knuckle spring hinge	630	24
3SP1 4.5 x 4.5 633	3 knuckle spring hinge	633	24
3SP1 4.5 x 4.5 640	3 knuckle spring hinge	640	24
3SP1 4.5 x 4.5 646	3 knuckle spring hinge	646	24
3SP1 4.5 x 4.5 652	3 knuckle spring hinge	652	24
3SP1 4.5 x 4.5 FBLK	3 knuckle spring hinge	FBLK	24
3 Knuckle plain bearing hinges			
5PB1 3.5 x 3.5 652	5 knuckle plain bearing hinge	652	24
5PB1 4.5 x 4.5 652	5 knuckle plain bearing hinge	652	24
5PB1 4.5 x 4.5 652 NRP	5 knuckle plain bearing hinge, NRP	652	24
5 Knuckle ball bearing hinges			
5BB1 3.5 x 3.5 652	5 knuckle ball bearing hinge	652	24
5BB1 4 x 4 652	5 knuckle ball bearing hinge	652	24
5BB1 4.5 x 4 630	5 knuckle ball bearing hinge	630	24
5BB1 4.5 x 4 630 NRP	5 knuckle ball bearing hinge, NRP	630	24
5BB1 4.5 x 4 652	5 knuckle ball bearing hinge	652	24
5BB1 4.5 x 4 652 NRP	5 knuckle ball bearing hinge, NRP	652	24
5BB1 4.5 x 4.5 600	5 knuckle ball bearing hinge	600	24
5BB1 4.5 x 4.5 600 NRP	5 knuckle ball bearing hinge, NRP	600	24
5BB1 4.5 x 4.5 606	5 knuckle ball bearing hinge	606	24
5BB1 4.5 x 4.5 612	5 knuckle ball bearing hinge	612	24
5BB1 4.5 x 4.5 613	5 knuckle ball bearing hinge	613	24
5BB1 4.5 x 4.5 613 NRP	5 knuckle ball bearing hinge, NRP	613	24
5BB1 4.5 x 4.5 619	5 knuckle ball bearing hinge	619	24
5BB1 4.5 x 4.5 619 NRP	5 knuckle ball bearing hinge, NRP	619	24
5BB1 4.5 x 4.5 625	5 knuckle ball bearing hinge	625	24
5BB1 4.5 x 4.5 626	5 knuckle ball bearing hinge	626	24

[Return to table of contents >](#)

Model number	Description	Finish	Qty/Case
5 Knuckle ball bearing hinges (cont..)			
5BB1 4.5 x 4.5 626 NRP	5 knuckle ball bearing hinge, NRP	626	24
5BB1 4.5 x 4.5 630	5 knuckle ball bearing hinge	630	24
5BB1 4.5 x 4.5 630 NRP	5 knuckle ball bearing hinge, NRP	630	24
5BB1 4.5 x 4.5 632	5 knuckle ball bearing hinge	632	24
5BB1 4.5 x 4.5 633	5 knuckle ball bearing hinge	633	24
5BB1 4.5 x 4.5 639	5 knuckle ball bearing hinge	639	24
5BB1 4.5 x 4.5 639 NRP	5 knuckle ball bearing hinge, NRP	639	24
5BB1 4.5 x 4.5 640	5 knuckle ball bearing hinge	640	24
5BB1 4.5 x 4.5 640 NRP	5 knuckle ball bearing hinge, NRP	640	24
5BB1 4.5 x 4.5 643	5 knuckle ball bearing hinge	643	24
5BB1 4.5 x 4.5 643 NRP	5 knuckle ball bearing hinge, NRP	643	24
5BB1 4.5 x 4.5 646	5 knuckle ball bearing hinge	646	24
5BB1 4.5 x 4.5 646 NRP	5 knuckle ball bearing hinge, NRP	646	24
5BB1 4.5 x 4.5 651	5 knuckle ball bearing hinge	651	24
5BB1 4.5 x 4.5 652	5 knuckle ball bearing hinge	652	24
5BB1 4.5 x 4.5 652 NRP	5 knuckle ball bearing hinge, NRP	652	24
5BB1 HT 4.5 x 4.5 652	5 knuckle ball bearing hinge, hospital tip	652	24
5BB1 4.5 x 4.5 BBLK	5 knuckle ball bearing hinge	BBLK	24
5BB1 4.5 x 4.5 FBLK	5 knuckle ball bearing hinge	FBLK	24
5BB1 4.5 x 4.5 FBLK NRP	5 knuckle ball bearing hinge, NRP	FBLK	24
5BB1 4.5 x 4.5 F643E/716	5 knuckle ball bearing hinge	F643E	24
5BB1 5 x 4.5 630	5 knuckle ball bearing hinge	630	24
5BB1 5 x 4.5 630 NRP	5 knuckle ball bearing hinge, NRP	630	24
5BB1 5 x 4.5 652	5 knuckle ball bearing hinge	652	24
5BB1 5 x 4.5 652 NRP	5 knuckle ball bearing hinge, NRP	652	24
5BB1HW 4.5 x 4 630 NRP	5 knuckle heavy weight ball bearing hinge, NRP	630	24
5BB1HW 4.5 x 4 652	5 knuckle heavy weight ball bearing hinge	652	24
5BB1HW 4.5 x 4 652 NRP	5 knuckle heavy weight ball bearing hinge, NRP	652	24
5BB1HW 4.5 x 4.5 613	5 knuckle heavy weight ball bearing hinge	613	24
5BB1HW 4.5 x 4.5 613 NRP	5 knuckle heavy weight ball bearing hinge, NRP	613	24
5BB1HW 4.5 x 4.5 626	5 knuckle heavy weight ball bearing hinge	626	24
5BB1HW 4.5 x 4.5 626 NRP	5 knuckle heavy weight ball bearing hinge, NRP	626	24
5BB1HW 4.5 x 4.5 630	5 knuckle heavy weight ball bearing hinge	630	24
5BB1HW 4.5 x 4.5 630 NRP	5 knuckle heavy weight ball bearing hinge, NRP	630	24
5BB1HW 4.5 x 4.5 639	5 knuckle heavy weight ball bearing hinge	639	24
5BB1HW 4.5 x 4.5 640	5 knuckle heavy weight ball bearing hinge	640	24
5BB1HW 4.5 x 4.5 640 NRP	5 knuckle heavy weight ball bearing hinge, NRP	640	24
5BB1HW 4.5 x 4.5 643 NRP	5 knuckle heavy weight ball bearing hinge, NRP	643	24
5BB1HW 4.5 x 4.5 646	5 knuckle heavy weight ball bearing hinge	646	24
5BB1HW 4.5 x 4.5 652	5 knuckle heavy weight ball bearing hinge	652	24
5BB1HW 4.5 x 4.5 652 NRP	5 knuckle heavy weight ball bearing hinge, NRP	652	24
5BB1HW 4.5 x 4.5 FBLK	5 knuckle heavy weight ball bearing hinge	FBLK	24
5BB1HW 5 x 4.5 626	5 knuckle heavy weight ball bearing hinge	626	24
5BB1HW 5 x 4.5 626 NRP	5 knuckle heavy weight ball bearing hinge, NRP	626	24
5BB1HW 5 x 4.5 630	5 knuckle heavy weight ball bearing hinge	630	24
5BB1HW 5 x 4.5 630 NRP	5 knuckle heavy weight ball bearing hinge, NRP	630	24
5BB1HW 5 x 4.5 652	5 knuckle heavy weight ball bearing hinge	652	24

[Return to table of contents >](#)

Model number	Description	Finish	Qty/Case
5 Knuckle ball bearing hinges (cont.)			
5BB1HW 5 x 4.5 652 NRP	5 knuckle heavy weight ball bearing hinge, NRP	652	24
5BB1HW 5 x 5 630 NRP	5 knuckle heavy weight ball bearing hinge, NRP	630	24
5BB1HW 5 x 5 652	5 knuckle heavy weight ball bearing hinge	652	24
5BB1HW HT 4.5 x 4.5 652	5 knuckle heavy weight ball bearing hinge, hospital tip	652	24
5BB1HW HT 5 x 4.5 652	5 knuckle heavy weight ball bearing hinge, hospital tip	652	24
5BB1SC 4.5 652	5 knuckle ball bearing swing clear hinge	652	24
5BB1BSC 4.5 652	5 knuckle ball bearing beveled swing clear hinge	652	24
5BB1HWSC 4.5 652	5 knuckle heavy weight ball bearing swing clear hinge	652	24
5BB1HWBSC 4.5 652	5 knuckle heavy weight ball bearing beveled swing clear hinge	652	24
5BB1HWSC 5 652	5 knuckle heavy weight ball bearing swing clear hinge	652	24
5BB1HWBSC 5 652	5 knuckle heavy weight ball bearing beveled swing clear hinge	652	24
5BB1WT 4.5 x 5 652	5 knuckle wide throw ball bearing hinge	652	24
5BB1WT 4.5 x 6 652	5 knuckle wide throw ball bearing hinge	652	24
Electrified 3 knuckle and 5 knuckle hinges			
3CB1 4.5 x 4.5 652 CON TW8	3 knuckle concealed bearing electric hinge, eight-wire	652	
3CB1HW 4.5 x 4.5 652 CON TW8	3 knuckle concealed bearing electric hinge, eight-wire	652	
5BB1 4.5 x 4 652 TW8 CON	5 knuckle ball bearing electric hinge eight-wire	652	
5BB1 4.5 x 4.5 626 CON TW4	5 knuckle ball bearing electric hinge four-wire	626	
5BB1 4.5 x 4.5 626 CON TW8	5 knuckle ball bearing electric hinge eight-wire	626	
5BB1 4.5 x 4.5 630 CON TW4	5 knuckle ball bearing electric hinge four-wire	630	
5BB1 4.5 x 4.5 630 CON TW8	5 knuckle ball bearing electric hinge eight-wire	630	
5BB1 4.5 x 4.5 652 CON TW4	5 knuckle ball bearing electric hinge four-wire	652	
5BB1 4.5 x 4.5 652 CON TW8	5 knuckle ball bearing electric hinge eight-wire	652	
5BB1 4.5 X 4.5 FBLK CON TW8	5 knuckle ball bearing electric hinge eight-wire	FBLK	
5BB1 5 x 4.5 652 CON TW8	5 knuckle ball bearing electric hinge eight-wire	652	
5BB1HW 4.5 x 4.5 626 CON TW8	5 knuckle heavy weight ball bearing electric hinge eight-wire	626	
5BB1HW 4.5 x 4.5 630 CON TW4	5 knuckle heavy weight ball bearing electric hinge four-wire	630	
5BB1HW 4.5 x 4.5 630 CON TW8	5 knuckle heavy weight ball bearing electric hinge eight-wire	630	
5BB1HW 4.5 x 4.5 652 CON TW4	5 knuckle heavy weight ball bearing electric hinge four-wire	652	
5BB1HW 4.5 x 4.5 652 CON TW8	5 knuckle heavy weight ball bearing electric hinge eight-wire	652	
5BB1HW 5 x 4.5 630 CON TW8	5 knuckle heavy weight ball bearing electric hinge eight-wire	630	
5BB1HW 5 x 4.5 652 CON TW4	5 knuckle heavy weight ball bearing electric hinge four-wire	652	
5BB1HW 5 x 4.5 652 CON TW8	5 knuckle heavy weight ball bearing electric hinge eight-wire	652	
Ives – Continuous hinges			
Aluminum geared hinges			
112HD 83" US28	HD full mortise continuous hinge, narrow frame and door leaf	US28	
112HD 83" US28 EPT LOC=30	HD full mortise continuous hinge, narrow frame and door leaf, EPT cutout @ 30"	US28	
112HD 83" 313AN	HD full mortise continuous hinge, narrow frame and door leaf	313AN	
112HD 85" US28	HD full mortise continuous hinge, narrow frame and door leaf	US28	
112HD 95" US28	HD full mortise continuous hinge, narrow frame and door leaf	US28	
112HD 95" US28 EPT LOC=42	HD full mortise continuous hinge, narrow frame and door leaf, EPT cutout @ 42"	US28	
112XY 83" US28	XY full mortise continuous hinge, narrow frame and door leaf	US28	
112XY 95" US28	XY full mortise continuous hinge, narrow frame and door leaf	US28	
157XY 83" US28	XY full surface continuous hinge	US28	
224HD 83" US28	HD full mortise continuous hinge, door edge protector	US28	
224HD 83" LH US28 EPT LOC=30	HD full mortise continuous hinge, door edge protector, left hand EPT cutout @ 30"	US28	

[Return to table of contents >](#)

Model number	Description	Finish	Qty/Case
Aluminum geared hinges (cont.)			
224HD 83" RH US28 EPT LOC=30	HD full mortise continuous hinge, door edge protector, right hand EPT, cutout @ 30"	US28	
224HD 83" US28 TEKWD	HD full mortise continuous hinge, door edge protector, TEKWD mount	US28	
224HD 95" US28	HD full mortise continuous hinge, door edge protector	US28	
224XY 83" US28	XY full mortise continuous hinge, door edge protector	US28	
Pin and barrel hinges			
700 83" US32D	Full mortise pin and barrel stainless hinge	US32D	
700 85" US32D	Full mortise pin and barrel stainless hinge	US32D	
700 93" US32D	Full mortise pin and barrel stainless hinge	US32D	
700 95" US32D	Full mortise pin and barrel stainless hinge	US32D	
705 83" US32D	Full mortise, full wrap pin and barrel stainless hinge	US32D	
Ives — Pivots			
7215 SET RH US26D	3/4" offset pivot set, 500 lb. top header, right hand	US26D	
7215 SET LH US26D	3/4" offset pivot set, 500 lb. top header, left hand	US26D	
7215 INT LH US26D	3/4" offset intermediate pivot, left hand	US26D	
7215 INT RH US26D	3/4" offset intermediate pivot, right hand	US26D	
7226 SET US26D	3/4" offset pivot set, 600 lb. top header and bottom base mount	US26D	
7230F SET US32D	3/4" offset pivot set, 1000 lb., top header and bottom base mount, fire rated	US32D	
7253 SET US26D	Center hung pivot set, 300 lb. bottom base mount	US26D	
7255 SET US26D	Center hung pivot set, 500 lb. bottom base mount	US26D	
Ives — Pulls and push plates			
Architectural pulls and push bars			
8103EZHD-0 US32D-316 STD 1.1/2" to <2"	Straight round door pull, EZ clearance, 10" CTC	US32D	
8190HD-0 US32D 1.3/4"	90 degree offset door pull, 10" CTC	US32D	
8190HD-2 US32D 1.3/4"	90 degree offset door pull, 12" CTC	US32D	
8190EZHD-0 US32D-316 STD 1.1/2" to <2"	90 offset door pull, EZ clearance, 10" CTC	US32D-316	
9190HD-33-0-US32D-NS-1.1/2" to <2"	90 degree offset pull/push bar combo, 10" CTC, 33" push bar	US32D-316	
Push plates			
8200-3.5x15-US32D	Push plate	US32D	
8200-4x16-BLK	Push plate	BLK	
8200-4x16-US10B	Push plate	US10B	
8200-4x16-US26D	Push plate	US26D	
8200-4x16-US32D	Push plate	US32D	
8200-6x16-US32D	Push plate	US32D	
8200-8x16-US32D	Push plate	US32D	
Pull plates			
8302-6-4x16-US32D-STD-1.1/2" to <2"	Pull plate, 3/4" pull, 6" CTC, 4x16" plate	US32D	
8302-8-4x16-US32D-STD-1.1/2" to <2"	Pull plate, 3/4" pull, 8" CTC, 4x16" plate	US32D	
8302-0-4x16-US32D-STD-1.1/2" to <2"	Pull plate, 3/4" pull, 10" CTC, 4x16" plate	US32D	
8303-8-4x16-US32D-STD-1.1/2" to <2"	Pull plate, 1" pull, 8" CTC, 4x16" plate	US32D	
8303-0-4x16-US32D-STD-1.1/2" to <2"	Pull plate, 1" pull, 10" CTC, 4x16" plate	US32D	
8305-8-4x16-US32D-STD-1.1/2" to <2"	Pull plate, flat pull, 8" CTC, 4x16" plate	US32D	
8305-0-4x16-US32D-STD-1.1/2" to <2"	Pull plate, flat pull, 10" CTC, 4x16" plate	US32D	
Kick plates and armor plates			
8400 US10B 8" x 34" B-CS	Kick plate, beveled, counter sunk mount	US10B	
8400 US10B 10" x 34" B-CS	Kick plate, beveled, counter sunk mount	US10B	

[Return to table of contents >](#)

Model number	Description	Finish	Qty/Case
Kick plates and armor plates (cont.)			
8400 BLK 10" x 34" B-CS	Kick plate, beveled, counter sunk mount	BLK	
8400 US32D 4" x 34" B-CS	Kick plate, beveled, counter sunk mount	US32D	
8400 US32D 4" x 35" B-CS	Kick plate, beveled, counter sunk mount	US32D	
8400 US32D 6" x 34" B-CS	Kick plate, beveled, counter sunk mount	US32D	
8400 US32D 6" x 35" B-CS	Kick plate, beveled, counter sunk mount	US32D	
8400 US32D 8" x 34" B-CS	Kick plate, beveled, counter sunk mount	US32D	
8400 US32D 8" x 34 1/2" B-CS	Kick plate, beveled, counter sunk mount	US32D	
8400 US32D 8" x 35" B-CS	Kick plate, beveled, counter sunk mount	US32D	
8400 US32D 8" x 40" B-CS	Kick plate, beveled, counter sunk mount	US32D	
8400 US32D 8" x 46" B-CS	Kick plate, beveled, counter sunk mount	US32D	
8400 US32D 10" x 22" B-CS	Kick plate, beveled, counter sunk mount	US32D	
8400 US32D 10" x 23" B-CS	Kick plate, beveled, counter sunk mount	US32D	
8400 US32D 10" x 28" B-CS	Kick plate, beveled, counter sunk mount	US32D	
8400 US32D 10" x 30" B-CS	Kick plate, beveled, counter sunk mount	US32D	
8400 US32D 10" x 32" B-CS	Kick plate, beveled, counter sunk mount	US32D	
8400 US32D 10" x 34" B-CS	Kick plate, beveled, counter sunk mount	US32D	
8400 US32D 10" x 34 1/2" B-CS	Kick plate, beveled, counter sunk mount	US32D	
8400 US32D 10" x 35" B-CS	Kick plate, beveled, counter sunk mount	US32D	
8400 US32D 10" x 38" B-CS	Kick plate, beveled, counter sunk mount	US32D	
8400 US32D 10" x 40" B-CS	Kick plate, beveled, counter sunk mount	US32D	
8400 US32D 10" x 41" B-CS	Kick plate, beveled, counter sunk mount	US32D	
8400 US32D 10" x 42" B-CS	Kick plate, beveled, counter sunk mount	US32D	
8400 US32D 10" x 43" B-CS	Kick plate, beveled, counter sunk mount	US32D	
8400 US32D 10" x 46" B-CS	Kick plate, beveled, counter sunk mount	US32D	
8400 US32D 10" x 47" B-CS	Kick plate, beveled, counter sunk mount	US32D	
8400 US32D 12" x 34" B-CS	Kick plate, beveled, counter sunk mount	US32D	
8400 US32D 12" x 40" B-CS	Kick plate, beveled, counter sunk mount	US32D	
8400 US32D 16" x 34" B-CS	Kick plate, beveled, counter sunk mount	US32D	
8400 US32D 30" x 34" B-CS	Armor plate, beveled, counter sunk mount	US32D	
8400 US32D 34" x 34" B-CS	Armor plate, beveled, counter sunk mount	US32D	
8400 US32D 34" x 35" B-CS	Armor plate, beveled, counter sunk mount	US32D	
8400 US32D 34" x 40" B-CS	Armor plate, beveled, counter sunk mount	US32D	
8400 US32D 34" x 46" B-CS	Armor plate, beveled, counter sunk mount	US32D	
8400 US32D 36" x 34" B-CS	Armor plate, beveled, counter sunk mount	US32D	
8400 US32D 36" x 46" B-CS	Armor plate, beveled, counter sunk mount	US32D	
Vandal resistant trim			
VR910-DT US32D	Vandal resistant trim, for VD 98/99, dummy trim	US32D	
VR910-NL US32D	Vandal resistant trim, for VD 98/99, night latch	US32D	
Flush pulls			
22 B10B	Flush pull, rectangle	B10B	20
22 B15	Flush pull, rectangle	B15	20
22 B26	Flush pull, rectangle	B26	20
22 B26D	Flush pull, rectangle	B26D	20
218 B15 4/PKG	Flush pull, small circle (price for box of 4)	B15	40
221 B10B	Flush pull, large circle	B10B	20
221 B15	Flush pull, large circle	B15	20
221 B26	Flush pull, large circle	B26	20

Model number	Description	Finish	Qty/Case
Flush pulls (cont.)			
221 B26D	Flush pull, large circle	B26D	20
221 B643E/716	Flush pull, large circle	B643E	20
221 BBLK	Flush pull, large circle	BBLK	20
222 B10B	Flush pull, rectangle	B10B	10
222 B15	Flush pull, rectangle	B15	10
222 B26D	Flush pull, rectangle	B26D	10
223 B10B	Flush pull, oval	B10B	10
223 B15	Flush pull, oval	B15	10
223 B26D	Flush pull, oval	B26D	10
227 B10B	Flush pull, deep well	B10B	10
227 B15	Flush pull, deep well	B15	10
227 B26	Flush pull, deep well	B26	10
227 B26D	Flush pull, deep well	B26D	10
227 BBLK	Flush pull, deep well	BBLK	10
950 RECT 1.5" 626	Decorative flush pull, rectangle	626	2
955 RECT 4 5/8" 626	Decorative flush pull, square deep well	626	2
960 RECT 3" 626	Decorative flush pull, rectangle narrow	626	2
962 RECT 2.5" 626	Decorative flush pull, rectangle black pocket	626	2
Sliding door pulls			
230 B10B	Sliding door edge pull	B10B	10
230 B15	Sliding door edge pull	B15	10
230 B26	Sliding door edge pull	B26	10
230 B26D	Sliding door edge pull	B26D	10
230 BBLK	Sliding door edge pull	BBLK	10
42B10B	Pocket sliding door bolt	B10B	10
42B15	Pocket sliding door bolt	B15	10
42B26	Pocket sliding door bolt	B26	10
42B26D	Pocket sliding door bolt	B26D	10
42B3	Pocket sliding door bolt	B3	10
990 A15	Sliding door pull	A15	10
990 B26	Sliding door pull	B26	5
990 B3	Sliding door pull	B3	5
990 B-613	Sliding door pull	B613	5
990 B-619	Sliding door pull	B619	5
990 B643E/716	Sliding door pull	B643E	5
990 BBLK	Sliding door pull	BBLK	5
991 A15	Sliding door pull, privacy	A15	10
991 A26D	Sliding door pull, privacy	A26D	10
991 A643E/716	Sliding door pull, privacy	A643E	10
991 B26	Sliding door pull, privacy	B26	5
991 B26D	Sliding door pull, privacy	B26D	5
991 B3	Sliding door pull, privacy	B3	5
991 B-613 1.3/4"	Sliding door pull, privacy	B613	5
991 B-619	Sliding door pull, privacy	B619	5
991 B643E/716	Sliding door pull, privacy	B643E	5
991 BBLK	Sliding door pull, privacy	BBLK	5

[Return to table of contents >](#)

Model number	Description	Finish	Qty/Case
Ives — Flush bolts and coordinators			
Automatic flush bolts			
FB31P-12-MD US32D	Automatic flush bolt, pair, metal doors, 12" rod	US32D	
FB31T-12-MD US32D	Automatic flush bolt, top only, metal doors, 12" rod	US32D	
FB32-12-MD US32D	Automatic flush bolt, metal doors, with auxiliary fire latch	US32D	
FB41P-WD US32D	Automatic flush bolt, pair, wood doors	US32D	
FB41T-WD US32D	Automatic flush bolt, top only, wood doors	US32D	
FB42-WD US32D	Automatic flush bolt, wood doors, with auxiliary fire latch	US32D	
Constant flush bolts			
FB51P-36-MD US32D	Constant latching flush bolt, pair, metal doors, 36" rod	US32D	
FB51T-12-MD US32D	Constant latching flush bolt, top only, metal doors, 12" rod	US32D	
FB52-12-MD US32D	Constant latching flush bolt, metal doors, with auxiliary fire latch	US32D	
FB61P-WD US32D	Constant latching flush bolt, pair, wood doors	US32D	
FB61T-WD US32D	Constant latching flush bolt, top only, wood doors	US32D	
Manual flush bolts			
261B15	Manual flush bolt, 4"	B15	10
262B10B	Manual flush bolt, 6" square end	B10B	10
262B15	Manual flush bolt, 6" square end	B15	10
262B26D	Manual flush bolt, 6" square end	B26D	10
265 B3	Manual flush bolt, 6" round end	B3	10
FB358 BLK	Manual flush bolt, top or bottom, wood doors	BLK	2
FB358 US10B	Manual flush bolt, top or bottom, wood doors	US10B	2
FB358 US26D	Manual flush bolt, top or bottom, wood doors	US26D	2
FB457-12 US26D	Manual flush bolt, top or bottom, metal doors, 12" rod	US26D	12
FB458-12 643E/716	Manual flush bolt, top or bottom, metal doors, 12" rod	643E	12
FB458-12 US10	Manual flush bolt, top or bottom, metal doors, 12" rod	US10	12
FB458-12 US10B	Manual flush bolt, top or bottom, metal doors, 12" rod	US10B	12
FB458-12 US15	Manual flush bolt, top or bottom, metal doors, 12" rod	US15	12
FB458-12 US26D	Manual flush bolt, top or bottom, metal doors, 12" rod	US26D	12
FB458-12 US4	Manual flush bolt, top or bottom, metal doors, 12" rod	US4	12
FB458-12-MD BLK	Manual flush bolt, top or bottom, metal doors, 12" rod	BLK	12
FB458-12-MD US3	Manual flush bolt, top or bottom, metal doors, 12" rod	US3	12
FB458-48 US26	Manual flush bolt, top or bottom, metal doors, 48" rod	US26	
Dust proof strikes			
DP1 US10B	Dust proof strike - round face plate	US10B	
DP1 US26D	Dust proof strike - round face plate	US26D	
DP2 BLK	Dust proof strike - rectangular face plate	BLK	
DP2 US10	Dust proof strike - rectangular face plate	US10	
DP2 US10B	Dust proof strike - rectangular face plate	US10B	
DP2 US15	Dust proof strike - rectangular face plate	US15	
DP2 US26	Dust proof strike - rectangular face plate	US26	
DP2 US26D	Dust proof strike - rectangular face plate	US26D	
DP2 US3	Dust proof strike - rectangular face plate	US3	
DP2 US4	Dust proof strike - rectangular face plate	US4	
Bar coordinators and filler bar			
COR42 US28w/FL20	Bar coordinator, 42" with 20" filler bar	US28	
COR52 US28	Bar coordinator, 52"	US28	
COR52 US28w/FL20	Bar coordinator, 52", with 20" filler bar	US28	

Model number	Description	Finish	Qty/Case
Bar coordinators and filler bar (cont.)			
COR52 315ANw/FL20	Bar coordinator, 52", with 20" filler bar	315AN	
COR52 US26Dw/FL20	Bar coordinator, 52", with 20" filler bar	US26D	
COR60 US28w/FL20	Bar coordinator, 60", with 20" filler bar	US28	
COR60 US28w/FL32	Bar coordinator, 60" with 32" filler bar	US28	
COR72 US28 W/FL32	Bar coordinator, 72" with 32" filler bar	US28	
FL20 US28	Filler bar for bar coordinator, 20"	US28	
Mounting brackets and gravity coordinator			
MB1 BLK	Mounting bracket, stop width over 2 1/2"	BLK	
MB1 SP28	Mounting bracket, stop width over 2 1/2"	SP28	
MB1 USP	Mounting bracket, stop width over 2 1/2"	USP	
MB2 BLK	Mounting bracket, stop width up to 2 1/2"	BLK	
MB2 SP28	Mounting bracket, stop width up to 2 1/2"	SP28	
MB2 USP	Mounting bracket, stop width up to 2 1/2"	USP	
MB2F SP28	Mounting bracket, stop width 2 3/8" - 3 1/4"	SP28	
COR7G US26D	Gravity coordinator, 7" projection	US26D	
Ives — Latches, catches and bolts			
Surface bolts			
SB360-12-T US2C	Surface bolt, 1 1/4" throw, 12" length	US2C	
SB453US10B-8-TB	Surface bolt, 1 3/16" throw, 8" length	US10B	5
SB453US26D-8-TB	Surface bolt, 1 3/16" throw, 8" length	US26D	5
SB453US2C-8-TB	Surface bolt, 1 3/16" throw, 8" length	US2C	5
SB453US26D-12-TB	Surface bolt, 1 3/16" throw, 12" length	US26D	5
40B10B 4	Decorative surface bolt, 4" length	B10B	10
40B15 4	Decorative surface bolt, 4" length	B15	10
40B26D 4	Decorative surface bolt, 4" length	B26D	10
40B10B 6	Decorative surface bolt, 6" length	B10B	10
40B15 6	Decorative surface bolt, 6" length	B15	10
40B26D 6	Decorative surface bolt, 6" length	B26D	10
40B3 6	Decorative surface bolt, 6" length	B3	10
Surface bolts			
054B10B	Dutch door bolt	B10B	5
054B26D	Dutch door bolt	B26D	5
S48 B15	Mortise door bolt	B15	10
S48 B26	Mortise door bolt	B26	10
S48 B3	Mortise door bolt	B3	10
S48B10B	Mortise door bolt	B10B	10
Door guards			
481 F643E/716	Chain door guard	F643E	10
481F15	Chain door guard	F15	10
481F26D	Chain door guard	F26D	10
481B26D	Chain door guard	B26D	10
482B26D	Solid bar door guard	B26D	5
Roller latches and angle stops			
RL30 BLK	Roller latch, high traffic	BLK	
RL30 US10B	Roller latch, high traffic	US10B	
RL30 US26D	Roller latch, high traffic	US26D	

[Return to table of contents >](#)

Model number	Description	Finish	Qty/Case
Roller latches and angle stops (cont.)			
RL32 BLK	Roller latch, light duty	BLK	
RL32 US10B	Roller latch, light duty	US10B	
RL32 US26D	Roller latch, light duty	US26D	
RL36 US32D	Roller latch, light duty	US32D	
RL38 US32D	Roller latch, rim style	US32D	
RL1152 BLK	Roller latch, high traffic with angle stop	BLK	
RL1152 US26D	Roller latch, high traffic with angle stop	US26D	
Invisible latches and catches			
CL11 US26D	Invisible latch, 13 lb. force	US26D	
CL12 US10	Invisible latch, 27 lb. force	US10	
CL12 US26D	Invisible latch, 27 lb. force	US26D	
CL12 US4	Invisible latch, 27 lb. force	US4	
CL21A US26D	Ball catch	US26D	
325 A92	Magnetic catch, double pole	A92	20
326A3	Magnetic catch, dual double pole	A3	10
326A92	Magnetic catch, dual double pole	A92	10
327A3	Magnetic catch, dual triple pole	A3	10
327A92	Magnetic catch, dual triple pole	A92	10
335 B10B	Roller catch, full lip strike	B10B	10
335 B3	Roller catch, full lip strike	B3	10
335B15	Roller catch, full lip strike	B15	10
335B26D	Roller catch, full lip strike	B26D	10
336B10B	Roller catch, box type strike	B10B	10
336B26D	Roller catch, box type strike	B26D	10
345 B3	Ball catch, adjustable	B3	10
347 B26D	Ball catch, adjustable, square corners	B26D	10
347 B5	Ball catch, adjustable, square corners	B5	10
347B10B	Ball catch, adjustable, square corners	B10B	10
347B15	Ball catch, adjustable, square corners	B15	10
347B26	Ball catch, adjustable, square corners	B26	10
347B3	Ball catch, adjustable, square corners	B3	10
347B4	Ball catch, adjustable, square corners	B4	10
349B10B	Ball catch, dual adjustable, round corners	B10B	10
349B15	Ball catch, dual adjustable, round corners	B15	10
349B26D	Ball catch, dual adjustable, round corners	B26D	10
2 A643E/716, Elbow cabinet latch	Elbow catch	A643E	20
2A14	Elbow catch	A14	20
2A3	Elbow catch	A3	20
2A92	Elbow catch	A92	20
SP2A3	Elbow catch - slim pack of 25 per box	A3	
SP2A92	Elbow catch - slim pack of 25 per box	A92	
Ives — Stops			
Floor stops			
FS13 US10B	Dome floor stop		
FS13 US26D	Dome floor stop	US10B	
FS17 US10B	Dome floor stop	US26D	
FS17 US26D	Dome floor stop	US10B	

[Return to table of contents >](#)

Model number	Description	Finish	Qty/Case
Floor stops (cont.)			
R14 5/16" US26D	Dome stop riser	US26D	
FS436 643E/716	Dome floor stop, oval	US26D	10
FS436 BLK	Dome floor stop, oval	BLK	10
FS436 US10	Dome floor stop, oval	US10	10
FS436 US10B	Dome floor stop, oval	US10B	10
FS436 US15	Dome floor stop, oval	US15	10
FS436 US26	Dome floor stop, oval	US26	10
FS436 US26D	Dome floor stop, oval	US26D	10
FS436 US28	Dome floor stop, oval	US28	10
FS436 US3	Dome floor stop, oval	US3	10
FS436 US4	Dome floor stop, oval	US4	10
FS438 BLK	Dome floor stop, oval	BLK	10
FS438 US10B	Dome floor stop, oval	US10B	10
FS438 US15	Dome floor stop, oval	US15	10
FS438 US26	Dome floor stop, oval	US26	10
FS438 US26D	Dome floor stop, oval	US26D	10
FS438 US28	Dome floor stop, oval	US28	10
R435 1/4" 719 Riser for FS436	Dome stop riser, oval	US26D	20
FS439 BLK	Universal dome floor stop	BLK	10
FS439 US10B	Universal dome floor stop	US10B	10
FS439 US26D	Universal dome floor stop	US26D	10
FS439 US32D	Universal dome floor stop	US32D	10
FS410 643E/716	Decorative floor stop	643E	
FS410 BLK	Decorative floor stop	BLK	
FS410 US26D	Decorative floor stop	US26D	
FS18S	Floor stop 1 1/2"	BLK	
FS18L	Floor stop 3 1/2"	BLK	
FS434 US2C	Floor stop	US2C	10
FS441 BLK	Floor stop	BLK	2
FS441 US10B	Floor stop	US10B	2
FS441 US26D	Floor stop	US26D	2
FS444 BLK	Floor stop, masonry	BLK	2
FS444 US10B	Floor stop, masonry	US10B	2
FS444 US15	Floor stop, masonry	US15	2
FS444 US26D	Floor stop, masonry	US26D	2
FS448 US10B	Floor stop, drywall/wood	US10B	2
FS448 US26D	Floor stop, drywall/wood	US26D	2
FS40 US26D	Floor stop and automatic holder		
FS41 US26D	Floor stop and automatic holder		
FS446 US10B	Floor stop and manual holder, masonry		2
FS446 US26D	Floor stop and manual holder, masonry		2
FS450 US26D	Floor stop and manual holder, drywall/wood		2
Wall stops, bumpers and holders			
FS495 US26D	Wall stop and automatic holder		
WS11 US26D	Wall stop, drywall/wood	US26D	
WS20 US26D	Manual wall holder- drywall/wood	US26D	
WS33 US26D	Wall stop, drywall/wood	US26D	
WS33X US26D	Wall stop, masonry	US26D	

[Return to table of contents >](#)

Model number	Description	Finish	Qty/Case
Wall stops, bumpers and holders (cont.)			
WS65 US27	Wall stop	US27	20
WS401/402CCV US10B	Wall bumper, concave	US10B	10
WS401/402CCV US26D	Wall bumper, concave	US26D	10
WS401/402CVX US10B	Wall bumper, convex	US10B	10
WS401/402CVX US26D	Wall bumper, convex	US26D	10
WS404 US26D	Wall bumper, convex	US26D	20
WS406/407CCV 643E/716	Wall bumper, concave	643E	10
WS406/407CCV BLK	Wall bumper, concave	BLK	10
WS406/407CCV US10	Wall bumper, concave	US10	10
WS406/407CCV US10B	Wall bumper, concave	US10B	10
WS406/407CCV US15	Wall bumper, concave	US15	10
WS406/407-CCV US26, Wall bumper	Wall bumper, concave	US26	10
WS406/407CCV US26D	Wall bumper, concave	US26D	10
WS406/407CCV US3	Wall bumper, concave	US3	10
WS406/407CCV US32D	Wall bumper, concave	US32D	10
WS406/407CCV US4	Wall bumper, concave	US4	10
WS406/407CVX 643E/716	Wall bumper, convex	643E	10
WS406/407CVX BLK	Wall bumper, convex	BLK	10
WS406/407CVX US10	Wall bumper, convex	US10	10
WS406/407-CVX US10B, Wall bumper	Wall bumper, convex	US10B	10
WS406/407CVX US15	Wall bumper, convex	US15	10
WS406/407CVX US26	Wall bumper, convex	US26	10
WS406/407CVX US26D	Wall bumper, convex	US26D	10
WS406/407CVX US32D	Wall bumper, convex	US32D	10
WS406/407CVX US4	Wall bumper, convex	US4	10
411 WHT	Wall bumper, adhesive	WHT	20
WS443 US26D	Wall stop, masonry		2
WS447 US26D	Wall stop, drywall/wood		2
WS445 US26D	Manual wall holder, masonry		2
WS449 US26D	Manual wall holder, drywall/wood		2
WS40 US26D	Automatic wall holder		
WS45 US26D	Automatic wall holder, drywall/wood		
WS45X US26D	Automatic wall holder, masonry		
Kick down holder			
FS452-4 US10B	Kick down holder, 4"		10
FS452-4 US26D	Kick down holder, 4"		10
FS452-5 US10B	Kick down holder, 5"		10
FS452-5 US26D	Kick down holder, 5"		10
FS455-4 US10B	Kick down holder, 4"		10
FS455-4 US26D	Kick down holder, 4"		10
FS455-4 US27	Kick down holder, 4"		10
FS544 SP28	Kick down holder, 4"		
FS544 SP313	Kick down holder, 4"		
FS555 SP28	Kick down holder, 5"		
Plunger door holder and roller bumpers			
FS1153 US28	Plunger type door holder		
FS1154 US26D	Plunger type door holder		

Model number	Description	Finish	Qty/Case
Plunger door holder and roller bumpers(cont.)			
RB471 US26D	Roller bumper, 4 1/2"		2
RB472 US26D	Roller bumper, 6"		2
Residential door stops			
060F10B	Flexible door stop, 3"	F10B	20
060F14	Flexible door stop, 3"	F14	20
060F15	Flexible door stop, 3"	F15	20
060F26D	Flexible door stop, 3"	F26D	20
060FBLK	Flexible door stop, 3"	FBLK	20
061F26D	Flexible door stop, 4"	F26D	20
60 B15, Wall DR Stop	Base door stop, 3 3/4"	B15	10
60A15	Base door stop, 3 3/4"	A15	20
60A26D	Base door stop, 3 3/4"	A26D	20
60A92	Base door stop, 3 3/4"	A92	20
61 A14, Wall DR Stop	Base door stop, 3 1/8"	A14	20
61 A3, Wall DR Stop	Base door stop, 3 1/8"	A3	20
61 A-W, Wall DR Stop	Base door stop, 3 1/8"	A-W	20
61A10B	Base door stop, 3 1/8"	A10B	20
61A15	Base door stop, 3 1/8"	A15	20
61A643E/716	Base door stop, 3 1/8"	A643E	20
61A92	Base door stop, 3 1/8"	A92	20
61ABLK	Base door stop, 3 1/8"	ABLK	20
61 B10B, Wall DR Stop	Base door stop, 3 1/8"	B10B	10
61 B15, Wall DR Stop	Base door stop, 3 1/8"	B15	10
61B26	Base door stop, 3 1/8"	B26	10
61B26D	Base door stop, 3 1/8"	B26D	10
61B3	Base door stop, 3 1/8"	B3	10
61 B5, Wall DR Stop	Base door stop, 3 1/8"	B5	10
61Z-643E/716	Base door stop, 3 1/8"	Z643E	20
63 F626E	Flexible door stop	F626E	20
63F-619E	Flexible door stop	F619E	20
63F643E/716	Flexible door stop	F643E	20
63FBLK	Flexible door stop	FBLK	20
63F-W	Flexible door stop	F-W	20
64 A92, Wall DR Stop	Base door stop	A92	20
64B26D	Base door stop	B26D	10
69F10B	Hinge pin door stop, adjustable	F10B	20
69F14	Hinge pin door stop, adjustable	F14	20
69F15	Hinge pin door stop, adjustable	F15	20
69F26D	Hinge pin door stop, adjustable	F26D	20
69FBLK	Hinge pin door stop, adjustable	FBLK	20
70 A15, Wall DR Stop	Hinge pin door stop	A15	20
70 A3, Wall DR Stop	Hinge pin door stop	A3	20
70 A-W, Wall DR Stop	Hinge pin door stop	A-W	20
70A10B	Hinge pin door stop	A10B	20
70A14	Hinge pin door stop	A14	20
70A26D	Hinge pin door stop	A26D	20
70A643E/716	Hinge pin door stop	A643E	20

[Return to table of contents >](#)

Model number	Description	Finish	Qty/Case
Residential door stops (cont.)			
70A92	Hinge pin door stop	A92	20
70ABLK	Hinge pin door stop	ABLK	20
70 B10B, Wall DR Stop	Hinge pin door stop	B10B	10
70B15	Hinge pin door stop	B15	10
70B26D	Hinge pin door stop	B26D	10
72Z-619E	Hinge pin door stop	Z-619E	50
73Z-619E	Hinge pin door stop	Z-619E	25
Door silencers and crash stops			
SR64 GRY	Door silencer, metal - 100/box	GRY	
SR65 GRY	Door silencer, wood - 100/box	GRY	
SR66 GRY	Door silencer, adhesive - 100/box	GRY	
CS115 US26D 20 1/2"	Crash stop, 20 1/2"	US26D	5
CS115 US10B 25 1/2"	Crash stop, 25 1/2"	US10B	5
CS115 US26D 25 1/2"	Crash stop, 25 1/2"	US26D	5
CS115 US26D 30 1/2"	Crash stop, 30 1/2"	US26D	5
Ives — Exterior hardware			
Lock guards			
LG1 US32D	Lock guard with security pin	US32D	
LG10 US32D	Lock guard	US32D	
LG12 US32D	Lock guard, narrow	US32D	
LG13 US32D	Lock guard	US32D	
LG14 US32D	Lock guard, for electric strike	US32D	
Viewers			
U696 B26D	One-way viewer, UL	B26D	10
U696 BBLK	One-way viewer, UL	BBLK	10
698 B3	One-way wide angle viewer	B3	10
698B26D	One-way wide angle viewer	B26D	10
698P B643E/716	One-way wide angle viewer	B643E	10
U698B15	One-way wide angle viewer, UL	B15	10
U698B26D	One-way wide angle viewer, UL	B26D	10
U698B3	One-way wide angle viewer, UL	B3	10
U698B643E/716	One-way wide angle viewer, UL	B643E	10
U698BBLK	One-way wide angle viewer, UL	BBLK	10
890311626: B26D	Viewer cover for U698	B26D	1
700B26D	One-way narrow viewer	B26D	10
U700B15	One-way narrow viewer, UL	B15	10
U700B26D	One-way narrow viewer, UL	B26D	10
Mail slots			
620B26D	Mail slot, magazine size box plate	B26D	1
620B3	Mail slot, magazine size box plate	B3	1
620B643E/716	Mail slot, magazine size box plate	B643E	1
620PA28	Mail slot, magazine size box plate	PA28	1
601 Mail Slot 630	Sleeve for letter box plate	630	1

Model number	Description	Finish	Qty/Case
Ives — Miscellaneous			
Brackets and hooks			
059 A10B	Hand rail bracket	A10B	20
059 A5	Hand rail bracket	A5	20
059 A643E/716	Hand rail bracket	A643E	20
059 A-W	Hand rail bracket	A-W	20
059A15	Hand rail bracket	A15	20
059A3	Hand rail bracket	A3	20
059A92	Hand rail bracket	A92	20
059ABLK	Hand rail bracket	ABLK	20
59 A3	Hand rail bracket	A3	10
59A10B	Hand rail bracket	A10B	10
59A14	Hand rail bracket	A14	10
59A15	Hand rail bracket	A15	10
59A643E/716	Hand rail bracket	A643E	10
59A92	Hand rail bracket	A92	10
59B15	Hand rail bracket	B15	10
59B3	Hand rail bracket	B3	10
SP59A3	Hand rail bracket - slim pack of 15 per box	A3	
405A92	Coat and hat hook	A92	20
571A14	Coat and hat hook	A14	20
571A15	Coat and hat hook	A15	20
571A26D	Coat and hat hook	A26D	20
571A3	Coat and hat hook	A3	20
571A643E/716	Coat and hat hook	A643E	20
571A92	Coat and hat hook	A92	20
571ABLK	Coat and hat hook	ABLK	20
571B15	Coat and hat hook	B15	10
571B26D	Coat and hat hook	B26D	10
SP571A92	Coat and hat hook - slim pack of 25 per box	A92	
572A15	Coat and hat hook	A15	20
572A92	Coat and hat hook	A92	20
572B26D	Coat and hat hook	B26D	10
574B26D	Coat and hat hook	B26D	10
575A92	Coat and hat hook	A92	10
580 A5	Ceiling hook	A5	20
580 A716	Ceiling hook	A716	20
580A15	Ceiling hook	A15	20
580A92	Ceiling hook	A92	20
581 A716	Wardrobe hook	A716	20
581A14	Wardrobe hook	A14	20
581A15	Wardrobe hook	A15	20
581A26D	Wardrobe hook	A26D	20
581A3	Wardrobe hook	A3	20
581A92	Wardrobe hook	A92	20
581B15	Wardrobe hook	B15	10
581B26D	Wardrobe hook	B26D	10
SP581A92	Wardrobe hook - slim pack of 50 per box	A92	

[Return to table of contents >](#)

Model number	Description	Finish	Qty/Case
Brackets and hooks (cont.)			
582A14	Double wardrobe hook	A14	20
582A15	Double wardrobe hook	A15	20
582A26D	Double wardrobe hook	A26D	20
582A92	Double wardrobe hook	A92	20
582ABLK	Double wardrobe hook	ABLK	20
582AW	Double wardrobe hook	AW	20
582 B10B	Double wardrobe hook	B10B	10
582B15	Double wardrobe hook	B15	10
582B26D	Double wardrobe hook	B26D	10
582 B716	Double wardrobe hook	B716	10
SP582A92	Double wardrobe hook - slim pack of 25 per box	A92	
SP586P	Closet pole sockets, plastic - slim pack of 20 per box	P	
507-626	Decorative Rhodes coat and hat hook	626	20
543-630	Decorative Camelot coat and hat hook	630	10
Window hardware			
07 A10B	Window lock	A10B	20
07 A3	Window lock	A3	20
07ABLK	Window lock	ABLK	20
07B15	Window lock	B15	10
07B26	Window lock	B26	10
07B3	Window lock	B3	10
026B3	Bar window lift	B3	10
026B643E/716	Bar window lift	B643E	10
066-RS-MS-SS A10B	Casement fastener	A10B	10
66-RS-MS-SS A5 CSMNT FSTNR	Casement fastener	A5	10
Rescue hardware			
299AB-7 US32D	Emergency stop assembly - offset	US32D	
299AS-7 US32D	Emergency stop assembly - center	US32D	

Model number	Description	Finish
Glynn-Johnson — Overhead holders		
100 Series concealed overhead door holders/stops		
103S US32D 1.3/4"DR	103S Concealed heavy-duty overhead door holder, hold-open and stop	630/US32D
104S US32D 1.3/4"DR	104S Concealed overhead door stop	630/US32D
104S US10B 1.3/4"DR	104S Concealed overhead door stop	613/US10B
104S BLK 1.3/4"DR	104S Concealed overhead door stop	676/BLK
104S US32D ADJ 1.3/4"DR	104S Concealed overhead door stop	630/US32D
104H US32D 1.3/4"DR	104S Concealed heavy-duty overhead door holder, hold-open and stop	630/US32D
105S US32D 1.3/4"DR	105S Concealed overhead door stop	630/US32D
106S US32D 1.3/4"DR	106S Concealed overhead door stop	630/US32D
410 Series concealed overhead door holders/stops		
414S US32D 1.3/4"DR	414S Concealed medium-duty overhead door holder, stop-only	630/US32D
450 Series surface overhead door holders/stops		
452S US32D 1.3/4"DR	4532 Medium duty surface mount overhead door stop	630/US32D
453S US32D 1.3/4"DR	453S Medium duty surface mount overhead door stop	630/US32D
454S US32D 1.3/4"DR	454S Medium duty surface mount overhead door stop	630/US32D
454S SP28 1.3/4"DR	454S Medium duty surface mount overhead door stop	689/SP28
454S 652 1.3/4"DR	454S Medium duty surface mount overhead door stop	652/26D
90 Series surface overhead door holders/stops		
902S US32D 1.3/4"DR	902S Heavy duty surface mount overhead door stop	630/US32D
903S US32D 1.3/4"DR	903S Heavy duty surface mount overhead door stop	630/US32D
904F US32D 1.3/4"DR	904F Heavy duty surface mount overhead door stop / friction holder	630/US32D
904H US32D 1.3/4"DR	904H Heavy duty surface mount overhead door stop / holder	630/US32D
904S 652 1.3/4"DR	904S Heavy duty surface mount overhead door stop	652/26D
904S BLK 1.3/4"DR	904S Heavy duty surface mount overhead door stop	676/BLK
904S SP28 1.3/4"DR	904S Heavy duty surface mount overhead door stop	689/SP28
904S US10B 1.3/4"DR	904S Heavy duty surface mount overhead door stop	613/US10B
904S US32D 1.3/4"DR	904S Heavy duty surface mount overhead door stop	630/US32D
904S US32D W/ANGLE BRKT 1.3/4", DR	904S Heavy duty surface mount overhead door stop with angle bracket	630/US32D
905S US32D 1.3/4"DR	905S Heavy duty surface mount overhead door stop	630/US32D
906S US32D 1.3/4"DR	906S Heavy duty surface mount overhead door stop	630/US32D

Model number	Description	Finish
Zero — Thresholds		
Saddle thresholds		
655A-36" (914MM)	Saddle threshold without supporting legs	Aluminum Mill Finish (A)
655A-223-36" (914MM)	Saddle threshold with 223 anchor	Aluminum Mill Finish (A)
545A-36" (914MM)	Saddle threshold with 2 supporting legs	Aluminum Mill Finish (A)
Rabbeted thresholds		
65A-72" (1829MM)	Full body strength rabbeted threshold	Aluminum Mill Finish (A)
65A-36" (914MM)	Rabbeted thresholds—standard with silicone Insert	Aluminum Mill Finish (A)
Zero — Automatic door bottoms		
Heavy duty automatic door bottoms		
369AA-36" (914MM)	Automatic door bottom with solid neoprene - heavy duty	Aluminum Clear Anodized (AA)
364AA-36" (914MM)	Sill protection automatic door bottom with solid neoprene insert - mortised - heavy duty	Aluminum Clear Anodized (AA)
360AA-36" (914MM)	Sill protection automatic door bottom with closed-cell sponge Neoprene Insert - mortised - heavy duty	Aluminum Clear Anodized (AA)
Regular duty automatic door bottoms		
355AA-36" (914MM)	Sill protection, automatic door bottom with solid neoprene insert, semi mortised, heavy duty	Aluminum Clear Anodized (AA)
351AA-36" (914MM)	Sill protection, automatic door bottom with solid neoprene insert, surface mounted	Aluminum Clear Anodized (AA)
Zero — Perimeter seal		
Door sweeps		
8198AA 36" (914MM)	Door sweep with brush	Aluminum Clear Anodized (AA)
8197AA 36" (914MM)	Door sweep with lip neoprene	Aluminum Clear Anodized (AA)
8192AA 36" (914MM)	Door Sweep with brush	Aluminum Clear Anodized (AA)
39BK 36" (914MM)	Door sweep with neoprene insert	Aluminum Black Anodized (BK)
39A 36" (914MM)	Door sweep with neoprene insert	Aluminum Mill Finish (A)
8192AA 36" (914MM)	Door sweep with brush	Aluminum Clear Anodized (AA)
328AA-S 36 X 84" (914 X 2134MM)	Perimeter seal with solid neoprene	Aluminum Clear Anodized (AA)
328AA 96" (2438MM)	Perimeter seal with solid neoprene	Aluminum Clear Anodized (AA)
328AA 84" (2134MM)	Perimeter seal with solid neoprene	Aluminum Clear Anodized (AA)
Astragals		
43SP 84" (2134MM)	Steel prime security astragal, surface mount	Steel Primed (SP)
8193AA 84" (2134MM)	Surface astragal with brush - self-adhesive	Aluminum Clear Anodized (AA)
Adjustable sealing systems		
870AA-S 36 X 84" (914 X 2134MM)	Adjustable perimeter gasketing acoustic door seal set	Aluminum Clear Anodized (AA)
Meeting stiles		
8303AA-S 36 X 84" (914 X 2134MM)	Jamb perimeter weatherstrip set	Aluminum Clear Anodized (AA)
475AA-S 36 X 84" (914 X 2134MM)	Perimeter seal with solid neoprene	Aluminum Clear Anodized (AA)
429AA-S 36 X 84" (914 X 2134MM)	Head and jamb gasketing	Aluminum Clear Anodized (AA)
Rain drip		
142AA 76" (1930MM)	Aluminum extruded drip cap	Aluminum Clear Anodized (AA)
142AA 40" (1016MM)	Aluminum extruded drip cap	Aluminum Clear Anodized (AA)

Model number	Description	Finish
Zero — Weatherstripping		
Self-adhesive weatherstripping		
8780N-BK 7ft PSA	Adhesive weatherstrip and mullion shield, neoprene	Black Anodized (BK)
8150S-BK 17ft PSA	Adhesive weatherstrip, silicone quadruple fin protection	Black Anodized (BK)
488FS-BK 17ft PSA	Adhesive weatherstrip, fire-rated silicone teardrop	Black Anodized (BK)
488S-BK 21FT PSA	Adhesive weatherstrip, silicone teardrop	Black Anodized (BK)
488S-BK 20FT PSA	Adhesive weatherstrip, silicone teardrop	Black Anodized (BK)
488S-BK 19ft PSA	Adhesive weatherstrip, silicone teardrop	Black Anodized (BK)
488S-BK 18ft PSA	Adhesive weatherstrip, silicone teardrop	Black Anodized (BK)
488S-BK 17ft PSA	Adhesive weatherstrip, silicone teardrop	Black Anodized (BK)
188S-BR 17FT PSA	Adhesive weatherstrip, silicone teardrop	Black Anodized (BK)
188S-BK 21ft PSA	Adhesive weatherstrip, silicone teardrop	Black Anodized (BK)
188S-BK 20FT PSA	Adhesive weatherstrip, silicone teardrop	Black Anodized (BK)
188S-BK 19ft PSA	Adhesive weatherstrip, silicone teardrop	Black Anodized (BK)
188S-BK 18ft PSA	Adhesive weatherstrip, silicone teardrop	Black Anodized (BK)
188S-BK 17FT PSA	Adhesive weatherstrip, silicone teardrop	Black Anodized (BK)
Miscellaneous		
47257391	223-10-24 Concrete anchor screwpack	

Frequently asked questions

Where do I find pricing for the quick ship products?

- There is no change from standard Ives, Glynn-Johnson, and Zero pricing by SKU for quick ship. You can refer to each pricebook for product pricing, warranty, and terms and conditions.

How do I place an order for Ives, Glynn-Johnson, and Zero quick ship products?

- Place orders via Allegion standard ordering process. You can fax at 1-877-424-8494, or email at Allegion_Orders@allegion.com.

Can I combine quick ship products and non-quick ship on my purchase order?

- To ensure your items ship in a week or less, please submit only quick ship items on your purchase order. Purchase orders that contain a mix of standard product and quick ship items will continue to follow existing customer account preferences (ship complete or ship partial). Made to order products will continue to ship with-in standard lead times.

Is there a minimum or maximum quantity to order of the products?

- There is no minimum quantity to order. Large quantities by product category may impact delivery lead time. You will be notified upon review if there is a need to limit the quantity.
- We estimate quantities to support large orders from historic item unit sales dating back 52 weeks. As spikes occur, we will adjust our position to support demand.

Will my product deliver as one shipment and invoice?

- Orders that mix between quoted and buying program are not guaranteed to ship or be invoiced as one. This is dependent on your Allegion freight plan. Contact your local Allegion sales rep for details on your freight plan.

For quick ship items, is there any changes to freight, returns or cancellations?

- No – the standard freight, cancellation, and return policies apply. Consult your local sales rep or Allegion customer support to learn more.

How does this program compare to ProExpress or FastTrack shipping programs?

- This program has the simplicity of our standard ordering process for Ives, Glynn-Johnson and Zero, from our expansive quick ship line-up, but with the speed and ease of our ProExpress and FastTrack shipping in a week or less.
- Allegion ensures quick delivery with our ProExpress and FastTrack shipping programs available for multiple brands. Learn more by viewing the ProExpress and FastTrack price book, or contact your local sales representative.

About Allegion

Allegion (NYSE: ALLE) is a global pioneer in seamless access, with leading brands like CISA®, Interflex®, LCN®, Schlage®, SimonsVoss® and Von Duprin®. Focusing on security around the door and adjacent areas, Allegion secures people and assets with a range of solutions for homes, businesses, schools and institutions.

For more, visit www.allegion.com

KRYPTONITE ■ LCN ■  ■ STEELCRAFT ■ VON DUPRIN



© 2023 Allegion
013784, Rev. 7/23
www.allegion.com/us